



RESIDENCE

BY THE WOLFSON GROUP



---

REDEFINING  
THE CONCEPT  
OF LIVING IN RBS

---



BUILDING  
III

BUILDING  
II

BUILDING  
I



# WELCOME HOME

Wolfson, the renowned Ramat Bet Shemesh development company that over the past decade has been instrumental in transforming the standard of Ramat Bet Shemesh residential living, now brings its flagship project to Neveh Shamir, one of RBS's most sought-after locations.

Rising high above its surroundings, **W Residence** will redefine the RBS skyline and is poised to become Ramat Bet Shemesh's most luxurious residential property. Combining modern design with class and style, **W Residence** is a self-contained gem that will incorporate ultra luxury facilities to service residents.



**W**  
RESIDENCE  
BY THE WOLFSON GROUP

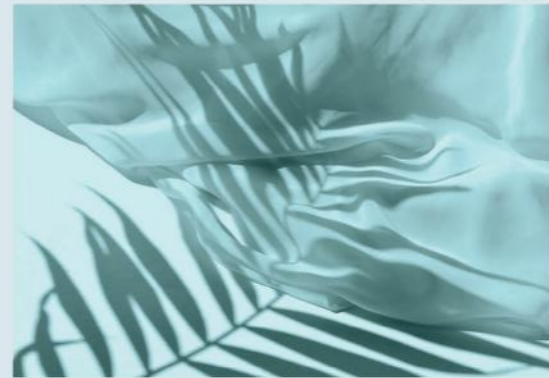
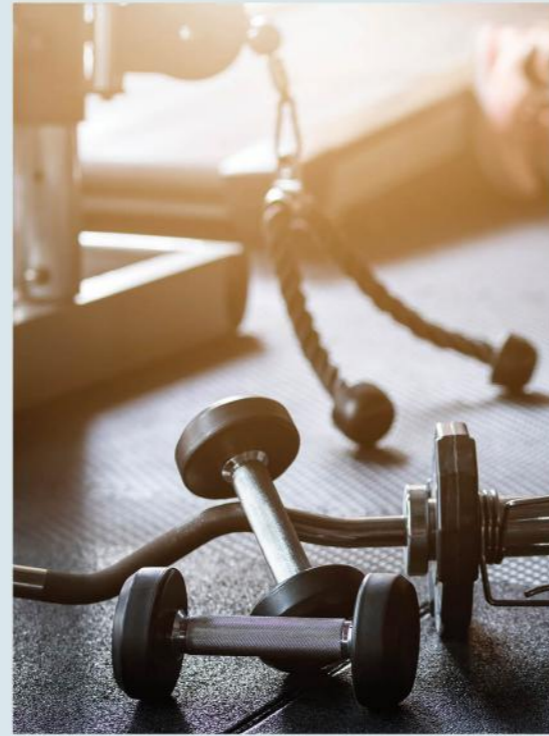
# WHERE ELEGANCE MEETS QUALITY

The majestic design of **W Residence** both from outside and within, will leave you no doubt of a new reality of Residential living in RBS, one uniquely of Wolfson standards.

Enter an expansive lobby usually found in a large city lavish tower and make your way through a luxurious setting to one of three elevators that will take you to your impressive floor.







# WHOLESOME LIVING

A swimming pool, gym, sauna, relaxspaces and courtyard as well as other services and facilities, incl. lecture room add the finishing touches to an unprecedented standard of living that this unique project offers its residents.

RELAX



LIVE



BREATH





# HIGH STANDARDS UNIQUE TO RBS

## W SPECS

W RESIDENCE OFFERS YOU LUXURY APARTMENTS AND QUALITY OF LIFE

### THE BUILDINGS:

- A luxurious and air-conditioned entrance lobby
- A well designed multipurpose meeting room for residents
- Three high-quality and stylish elevators
- Two staircases
- Swimming pool\*
- Sauna\*
- Fully equipped gym\*
- Underground-parking lot
- Preparation for electric vehicle charger in each parking space
- Storage room for each apartment

\* located in building 1 for the use of residents from all three buildings in the complex

### THE APARTMENT:

- High quality designed entrance door
- Intercom with a color display at the apartment entrance
- Double glazed windows with insulating glass
- Central air conditioning in the entire apartment
- Five-room apartments have a separate air conditioning unit in the master bedroom
- Three-phase electricity 40\*3
- Preparation for a smart home
- Shabbat clock for lighting
- Preparation for gas water heating system
- High quality electrical accessories
- Preparation for a gas point on the terrace for a BBQ
- TV + telephone/communication outlet in every room
- Elegant interior doors with a height of approximately 210/220 in a variety of colors with hidden hinges and high quality handles
- Floor tiles - a wide choice from a large variety of styles and finishings, sized up to 100\*100
- Five-room apartments also include a choice of floor tiles sized 120\*120

- A sun terrace that includes a stone or aluminum railing combined with glass + flooring with "anti-slip" porcelain granite tiles/parquet-look porcelain floor tiles
- Water outlet on the terrace

### THE KITCHEN:

High-quality designed kitchens from two leading manufacturers that include:

- Upper and lower cabinets made of sandwich wood in a choice of finishes
- Built in unit for oven and microwave in 4 and 5 room apartments
- Quality drawers with quiet closing systems
- A variety of backsplash tile options
- Two quality pull-out faucets
- Two flush-mounted large acrylic/stainless steel sinks
- Dishwasher preparation
- Gas point + three-phase electric point for electric stoves
- Caesar stone counter tops - choice of styles

### THE BATHROOMS AND TOILETS:

- "Anti-slip" porcelain flooring in a number of sizes and styles
- Wall ceramic tiles in a selection of sizes and styles
- Rimless wall mounted designed toilets in all bathrooms
- Choice of round or square flusher in various styles
- Bathroom cabinet made of HCP material with a lifetime warranty from the supplier, including a mirror and integrated sink in all bathrooms
- Hand washing (netilat yadayim) HCP surface
- Quality faucets by GROHE

WAKING UP TO THIS VIEW



COULD BE A REALITY

# WONDERFUL WAY TO LIVE

In a perfect location, set in pastoral surroundings, **W Residence** is but a short distance from the expansive Yarmut park complete with outdoor activities, cycling lanes, sports, kids play areas and more. It will also incorporate stores, making it ever so easy for residents to obtain their daily needs.



# PERFECT LOCATION PASTORAL SURROUNDINGS



THE BEST OF NEVEH SHAMIR

BUSINESS CENTER  
SHOPPING CENTER  
COFFEE SHOPS  
RESTAURANTS  
YARMUT PARK  
BIKE ROUTES





Green Market | Green Market | Espresso | bistro BAR | STEAK HOUSE | espresso |





---

# COMMUNITY

For us, sales are not only about populating homes, but even more importantly about building communities.

Because we understand that residents of our projects contribute to each other's standard of living, special care is taken with our approach to sales. In **W Residence** too, we will continue with this same approach and once again sales will be managed by Ilana Fish, renowned not only for her professionalism, but also for her special standard of client care and service and compatibility to the type of client that seeks a Wolfson home.

---

**GREEN HILLS, RAMAT BET SHEMESH DALET 4- 800 APARTMENTS**



Complex A, 70 apartments



Complex B, 156 apartments



Complex C, 246 apartments



Complex D, 144 apartments



Complex E, 91 apartments



Complex F, 109 apartments

**GREEN AVENUE, RAMAT BET SHEMESH GIMMEL 2- 295 APARTMENTS, 1500 m<sup>2</sup> COMMERCIAL SPACE**



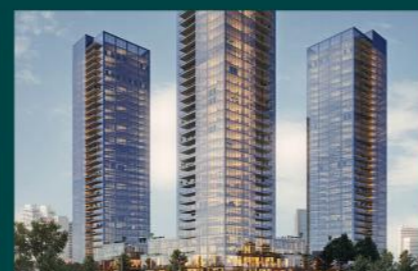
**GREEN VIEW, RAMAT BET SHEMESH DALET 2- 358 APARTMENTS, 5000 m<sup>2</sup> COMMERCIAL SPACE**



DAVID'S GARDENS, BNEI BRAK



SHOP TIME, PETACH TIKVA



B.S.R. CITY, PETAH TIKVA



SAIDOFF, JERUSALEM



KIRYAT GAT, FUTURE PROJECT



B.S.R. CITY, PETAH TIKVA



**THE WOLFSON GROUP IS:**

One of Israel's leading concerns in the real estate development and construction industry with a solid financial base and sterling reputation, earned over decades of experience and rigorous care with delivering high standards of planning and execution in every project.

Actively involved in developing multiple Real Estate projects throughout Israel, including participation in development of residential neighborhoods, commercial centers, residential towers, offices and large urban renewal projects, such as: 'Saidoff' in Jerusalem, 'David's Gardens' in Bnei Brak, 'B.S.R. City' & 'Shop Time' in Petach Tikva, 'Green Avenue' in Ramat Bet Shemesh Gimmel 2, Green View in Ramat Bet Shemesh Dalet 2, and Green Hills in Ramat Bet Shemesh Dalet 4.

Construction in Ramat Bet Shemesh is carried out via a Group subsidiary. This offers all the benefits of an end-to-end Wolfson Group project, in particular their ability to construct the entire project concurrently, offering purchasers the security of quality and timeous implementation.

The Wolfson group takes great pride in its standard of building and finishings and invests much time, effort and money in delivering a high standard quality product. A visit to any of its many projects in RBS comprising over 1500 apartments in nearly 100 upscale residential buildings provides quick confirmation of a new standard of building and service in RBS that has been set by the Wolfson Group, each time creating prominent landmarks in the cities various neighborhoods.









**SALES**

**ILANA FISH**

**+972-508-633-506**

**ilanafishrealty@gmail.com**

**www.ilanarealty.com**

**+972-3-970-0805**

**office@wolfson-group.com**



The information, pictures and plans provided herein are for illustration purposes only and may change. Only a fully signed purchase contract together with signed plans and specifications will obligate the company.

---

ARCHITECTS: A. PRION A. BRUDNER ARCHITECTS AND URBAN PLANNERS  
BRANDING STRATEGY & DESIGN: RACHEL EYTAN STUDIO